

BALI JOURNEY INDONESIA 2023

MAY 9 - 11



1. Travel Information
 - a. Itinerary
 - b. Preparation Guide
 - c. Accommodations
 - d. Participant List
2. Travel Guidelines
 - a. Visitor Guidelines
3. Programmatic Information
 - a. Operating Structure
 - b. Indonesia Programme Overview

Itinerary in Brief

TUESDAY, MAY 9	Welcome reception and dinner at the Hyatt Regency Sanur
WEDNESDAY, MAY 10	Visit to a Room to Read partner school in Bali (departing from the Hyatt Regency Sanur) Lunch at a local restaurant with special presentation and discussion with the Ministry of Education Optional group dinner at a local restaurant
THURSDAY, MAY 11	Global and Joint Board meetings at the Hyatt Regency Sanur Programmatic experience with key partners and stakeholders Farewell dinner at a local restaurant
FRIDAY, MAY 12	Departure day



Map: Indonesian Islands

Indonesia is the fourth most populous country in the world, consisting of 17,000 islands, as well as urban, rural and remote regions, diverse cultures and more than 700 living languages.

Detailed Itinerary

The following is a tentative itinerary and is subject to change as some details continue to be finalized. Although we do our best to follow the order of activities outlined below, changes may be necessary due to weather, route conditions, status of projects and other factors beyond our control. We appreciate your patience and understanding.

TUESDAY, MAY 9

Arrive at Ngurah Rai International Airport. Please arrange your own airport transfer. We strongly encourage you to book your stay at the [Hyatt Regency Sanur, Bali](#).

Please make your way to the Hyatt Regency Sanur, Purnama Terrace at **6:00 PM** for a welcome reception with your fellow travelers and the Room to Read and partner staff who will be your guides for the journey. Immediately following the reception, we'll have dinner at the hotel.

Meals included: Dinner

DAY ONE – WEDNESDAY, MAY 10

Enjoy breakfast at your hotel before starting the day's activities. Breakfast at the Hyatt Regency opens at 6:30 AM.

Please arrive at the Hyatt Regency hotel lobby at **8:00 AM** for an overview of the day's schedule and planned activities. At **8:30 AM** we will depart in two groups to schools located approximately 30 minutes from the hotel. Each group will visit one of our partner schools where we will take a deeper look into how Room to Read supports children to develop the habit of reading through quality reading materials, safe and child-friendly learning environments, and training teachers in effective library management and reading activities. In school, you will have the chance to learn about the library, participate in teacher-led library activities, interact with the students, talk with school staff and meet a range of program stakeholders. After the morning's visit, both groups will come together for lunch at a local restaurant.

Following lunch, we'll be joined by Indonesia's Director General of Education, Dr. Iwan Syahril, for a presentation and discussion on the state of education in Indonesia, the Ministry of Education's literacy agenda, and Room to Read's role in supporting the national agenda.

After lunch, we'll return to the Hyatt Regency by 2:30 PM to enjoy free time to explore the local area, catch up with work or simply relax in the hotel before rejoining the group at **6:15 PM**, when we will travel to a local restaurant for a traditional Balinese dinner. **Dinner is optional so please let us know if you will not be joining us.**

Meals included: Lunch, Optional Dinner

Note: *If a student or community member approaches you and asks for additional resources or funding, please do not make any commitment to them about extra support beyond the scope of our programs. Instead, please connect the individual with a Room to Read or YLAI staff member.*

DAY TWO – THURSDAY, MAY 11

Enjoy breakfast at your hotel before starting the day's activities. Breakfast at the Hyatt Regency opens at 6:30 AM.

Global Board Members to meet at the Hyatt Regency Wantilan 3 conference room at **9:00 AM** for the Global Board Meeting.

Regional Board Members will join **Global Board Members** at **11:00 AM** for a joint board meeting taking place in Wantilan 5 conference room. Lunch will be provided at **1:30 PM at the Hyatt Regency for all Board Members.**

All meeting rooms are located directly off the Wantilan Courtyard which can be reached from the hotel lobby.

Other guests are free to spend the morning exploring the local area or relaxing at the hotel.

Our long-term vision in Indonesia is to ensure every government primary school in the country has a functioning school library, with a high-quality collection of children's storybooks; and that teachers use the storybooks to conduct effective reading activities and support classroom learning.

From **3:00 PM – 5:00 PM**, **all board members and guests are invited** to reconvene in Wantilan 5 for a deeper look into two vital components of Room to Read's work in Indonesia: Book Publishing and Developing Teachers. For our look inside Book Publishing, we'll enjoy an interactive session with a book publishing partner as well as a local author and illustrator to learn about the process of creating and publishing new storybooks. We'll then transition to a discussion with two teachers to learn about how Room to Read trains and supports teachers and is creating a national demand for great books.

There will be an hour and a half of free time to freshen up before dinner. Please meet at **6:15 PM** at the Hyatt Regency hotel lobby. We will travel together to a local restaurant for a farewell dinner. As our last event, we look forward to reflecting on the experiences we've had as a group, enjoying local food, sharing our favorite moments, and empowering each other to continue our dedication to the children we serve from the trip before parting ways.

Meals included: Lunch, Dinner

DEPARTURE DAY - FRIDAY, MAY 12

Guests are free to check out and depart today. Please arrange your own airport transfer.

Entry Requirements

VISAS

Depending on your country of origin you may need to purchase a visa on arrival in Indonesia, or possibly apply for one in advance. For information on visa requirements, please visit this website: <https://bali.com/bali/bali-visa-indonesia-entry-regulations/>. We recommend all travelers enter on a **tourist visa**.

TRAVEL DOCUMENTS

It is the responsibility of travelers to ensure that passports are valid for six months beyond the intended length of stay. There should be at least two blank visa pages for any visa as well as for entry stamps on arrival. Please note these are visa pages, not endorsement pages. All passport holders should verify with their travel agent or relevant consulate concerning visa entry requirements. If you are extending your journey to other countries, please meet entry requirements for those countries as well.

VACCINATIONS

Visiting the Room to Read Office or Partner Community

By entering the Room to Read office and/or visiting a partner community, you understand the following requirements and recommendations.

- It is our strong recommendation that you are [up-to-date](#) on COVID-19 boosters.
- You are responsible for monitoring for COVID-19 symptoms before visiting our work. We ask that you postpone your visit if you are sick/unwell.
- If you develop symptoms or test positive within 48 hours following your Room to Read visit, please notify your Room to Read contact so that we can inform those in the office or community as relevant. Your identity will be kept confidential by Room to Read to the maximum extent possible.

COVID-19: Currently travelers entering Indonesia are not required to produce vaccination certificates or recent negative PCR tests. Requirements are subject to change at any time.

Transfers

We kindly ask that you arrange your own airport transfers to and from the airport. If you're looking for a local driver in Bali for airport transfers or other excursions, this person comes recommended by a board member.

Mr. Putra

WhatsApp: +62 819-9916-1567

Climate

The weather in Indonesia varies slightly depending on the region.

May is one of the hottest months in Bali, with an average temperature of 28°C. During the month it can range from 25°C and 33°C, with typically bright, sunny days and comfortable evening temperatures. It is also a lovely time of year to swim in the sea, with sea temperatures sitting at around 28°C.

As May is during the dry season in Bali you are unlikely to see much rain, although the area gets on average around 8 days of light rain throughout the month.

Packing

Shorts and short skirts are acceptable in cities and on beaches, but pants or skirts that fall below the knee are better when traveling to smaller towns and to the school communities. Plan to wear modest clothing and bring a lightweight scarf or a light long sleeve shirt for school visits. You can expect the staff and school community to dress in business casual for the visits.

Remember to pack the following items:

- ☐ Passports, air tickets, inoculations certificate or booklet (if required)
- ☐ Make copies of all important documents including passports, visas, driver's license, credit cards, airline tickets, insurance information, etc. Leave one set of copies at home with someone you can easily contact. Keep one set with you.
- ☐ Dress comfortably for walking and bus travel. We recommend pants or long skirts, blouses, t-shirts, and light long-sleeved shirts, a sweater or pashmina for air-conditioned vehicles, hotels, and restaurants.
- ☐ Bathing suit
- ☐ Basic toiletries
- ☐ Sunglasses, hat, lip balm and any sun-protectant you normally use.
- ☐ Umbrella (for rain and sun protection)
- ☐ Toilet paper or tissue to carry with you. Bathroom facilities at school may be basic.
- ☐ Hand sanitizer
- ☐ Mosquito repellent
- ☐ Small travel medical kit with typical items such as bandages, painkillers, anti-diarrhea medication, anti-itch cream, sanitary napkins or tampons, cold medicine, sleep aids, ear plugs, antihistamines, and, if needed, an adequate supply of prescription medications clearly labeled, etc.
- ☐ Small towel or handkerchief
- ☐ Plug adaptor and (if needed) power converter
- ☐ Suitcase or backpack with luggage locks. Please make sure your name is clearly labeled on each piece of luggage. Sometimes a colored ribbon will identify your luggage more easily if it is just a black bag.

General Security Tips as you Prepare for Travel

- Do not carry large quantities of cash.
- Do not carry jewelry, wallets, or purses that are not travel-safe and cannot be worn over your shoulder.
- Use your dress and appearance to blend in rather than stand out. Pack accordingly.
- Always inform others of your plans (family, consulate/embassy).
- Leave copies of all your information (credit cards, passport numbers, air tickets, itinerary, etc.) with family or friends at home.
- Once you have arrived, keep your travel documents in a separate, secure location from your passport.

Trip Costs

1 USD = around 15,318 Indonesian Rupiah (Rp)

We recommend exchanging the money you will need for your time in Indonesia either before you arrive or at the airport in Bali.

Expenses you will need to cover:

- Visas
- International flights
- Hotels
- Meals not included in the itinerary
- Transportation not included in the itinerary (please arrange airport transfers directly through your hotels)
- Medical expenses and traveler's insurance
- Items of a personal nature i.e., gratuities for hotel and restaurant staff; curios; phone calls; ATM & bank fees, etc. Please note that tipping is customary for great service in Bali.
- Storage or transport of excess luggage

Health

There are a few basic health matters that require care and attention. The following points are recommended guidelines only. Please consult your doctor and check with your country's health department at least 4-6 weeks prior to departure for any changes in health regulations.

INSURANCE

You are solely responsible for ensuring that you carry the correct comprehensive travel and medical insurance to cover yourself for the duration of your trip to Indonesia.

FOOD

Please note that we will be dining at the hotel and local restaurants throughout the trip and menus will reflect the local cuisine. Although we will ensure there are vegetarian, vegan, and gluten-free options during our scheduled meals if you have dietary restrictions, please keep in mind that local cuisine may strongly differ from what you are accustomed to. If you tend to be a selective eater or just want some variety, we suggest bringing snacks from home.

Safe to Eat: <ul style="list-style-type: none">- Those that have been thoroughly cooked inside and out, and that have been served too hot to eat immediately.- Fruits with thick skins (oranges, bananas, etc.) may be OK if the peel is thoroughly washed in clean water.- Commercially bottled water, carbonated soft drinks, beer, wine, and alcohol served in sealed containers- Beverages made with boiled water, such as hot coffee and tea- Water served at the hotel restaurant where you will stay is safe to drink.	Please Be Careful With: <ul style="list-style-type: none">- Raw food- Cold sauces (chutneys, salsas, mayonnaise, etc.)- Under-cooked meats, eggs- Any cooked food that has been allowed to stand for several hours at room temperature.- Food and beverages from street vendors or market stalls- Ice if you are not sure where it has come from
--	--

WATER

It is strongly recommended that you drink bottled water throughout Indonesia. It is important to stay hydrated during periods of heat and humidity. We will have a supply of bottled water with us in the vehicles. Avoid tap water and ice unless made from boiled, bottled, or filtered water. Don't drink from wet cans or bottles as the water on them may be contaminated. We advise that you do not brush your teeth with tap water.

MEDICAL CONDITIONS

Please make us aware of any medical conditions you have prior to your arrival. This includes any allergies e.g. bee stings, nuts, shellfish etc.

MEDICINE

As a safeguard, it is recommended that you travel with medicines to help manage Travelers' Diarrhea. Use Pepto-Bismol and/or Imodium to help manage mild to moderate cases of Travelers' Diarrhea. Antibiotics should only be taken on a stand-by basis once moderate-to-severe diarrhea occurs. Always disinfect your hands prior to eating, after going to the bathroom, or having contact with animals.

Room to Read staff will always have a First Aid kit on them.

COVID-19

It is our strong recommendation that you are up-to-date on COVID-19 boosters. You are responsible for monitoring for COVID-19 symptoms before visiting our work. We ask that you do not attend if you are sick/unwell. If you develop symptoms or test positive within 48 hours following your Room to Read visit, please notify your Room to Read contact so that we can inform those in the office or community as relevant. Your identity will be kept confidential by Room to Read to the maximum extent possible.

ZIKA WARNING

The World Health Organization has categorized Indonesia as a category 2 risk for Zika transmission meaning there is possible endemic transmission or evidence of local mosquito-borne Zika infections. Please note that the occurrence of ZIKA within a specific country might highly vary, depending on where in the country you find yourself. We highly recommend that you read more about the risks and preventative measures by visiting these two sites:

- <http://www.who.int/topics/zika/en/>
- <https://www.cdc.gov/zika/>

Other

LANGUAGE

Bahasa Indonesian is the official language of Indonesia, though English is widely spoken.

TIME

Indonesia is 7 hours ahead of Greenwich Mean Time (GMT).

TELEPHONE

Telephone code: +62

FLIGHT CHECK-IN TIMES

Please check-in early at all airports (at least two hours' prior for domestic flights, three hours for all international flights) due to additional security which now affects international travel around the world.

PHOTOGRAPHY

Please be courteous, polite and always ask permission before taking pictures of local communities. More specific guidelines regarding photography at projects are provided in the "Visitor Guidelines" section of this binder.

Please note that photography of government buildings, many airport buildings, State House and officials in uniform is normally strictly prohibited.

ELECTRICITY

It is recommended that you travel with a universal plug adapter. The voltage in Indonesia is 220 V. Don't use the main power for your computer without an Uninterrupted Power Supply (UPS) machine.

COMMUNICATION

Telecommunications in urban areas is possible and cell phone access is available. However, do not expect cell phone coverage in less accessible areas. Internet access is available at all hotels where we will be staying.

LOSS OF ARTICLES

We will do our best to help you locate your misplaced items but please note that we cannot accept any responsibility for the misplacement of any of your personal articles during your travels.

ADDITIONAL RESOURCES

We invite you to check out the following books, videos, films, and podcasts related to Indonesia:



BOOKS

12 Indonesian books you should add to your reading list:

<http://www.thejakartapost.com/life/2016/05/17/12-indonesian-books-you-should-add-to-your-reading-list.html>

Amazon's Best Sellers on Indonesia: <https://www.amazon.com/Best-Sellers-Books-Indonesian-History/zgbs/books/4896>

Indonesia Travel Guide: <https://www.amazon.com/Lonely-Planet-Indonesia-Travel-Guide/dp/1741798450>



MOVIES

Laskar Pelangi (Rainbow Warriors), 2008: <http://www.imdb.com/title/tt1301264/reviews>

10 quality Indonesian movies to watch: <http://www.wowshack.com/10-quality-indonesian-movies-you-have-to-watch/>

VIDEO

The Act of Killing: <http://www.imdb.com/title/tt2375605/>

The Look of Silence: http://www.imdb.com/title/tt3521134/?ref=nm_sr_1



PODCASTS

A History of Indonesia: <https://itunes.apple.com/us/podcast/a-history-of-indonesia/id1126179389?mt=2>

Talking Indonesia: <https://open.spotify.com/show/6gwgrqZuYlw5gVaSjisQ1R>

We strongly encourage you to book your stay at the Hyatt Regency Sanur, Bali. The meeting location prior to the Room to Read site visit, Board of Directors meeting, and Programmatic Experience will all take place at the Hyatt Regency Sanur, and all Room to Read staff will be staying onsite. Due to the at-times heavy traffic in Bali, staying on site will allow for extra down time and will save you the trouble of arranging transfers to the Hyatt for all activities.

Hyatt Regency Sanur, Bali

<https://www.hyatt.com/>

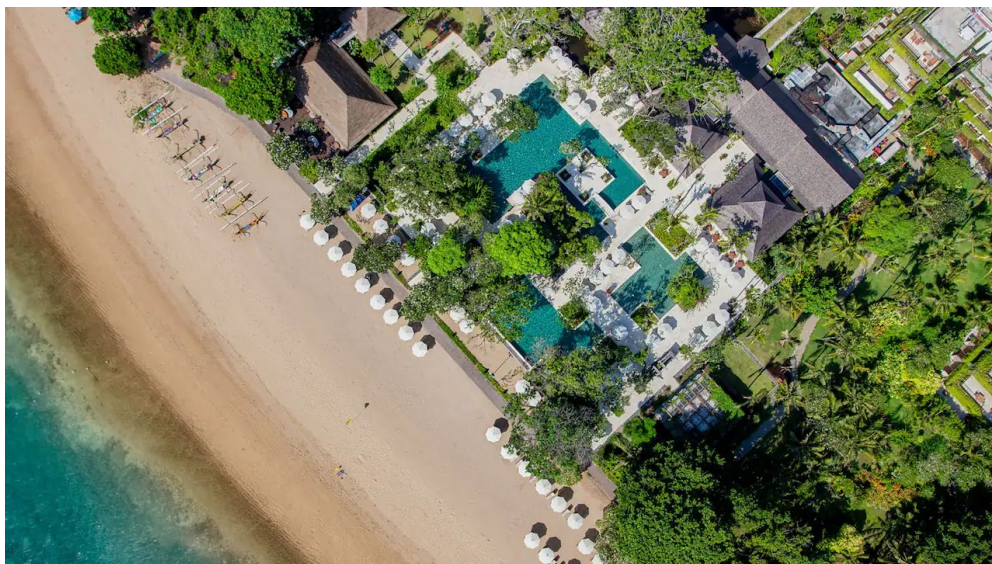
Jl. Danau Tamblingan No.89, Sanur, Denpasar Selatan, Kota Denpasar, Bali 80228, Indonesia

+62 361 281234

Check-in time: From 15:00

Check-out time: Until 12:00

Boasting a private beach and surrounded by tropical gardens, Hyatt Regency Bali is located in the heart of Sanur. Guests enjoy garden or sea view from one of the 363 elegant rooms. This beachfront resort also houses 3 dining options and 3 outdoor pools. The resort has extensive wellness facilities, including a 24-hour gym, a spa and a sauna. Hyatt Regency Bali is conveniently located near Bali's main tourist attractions, and the International Airport Ngurah Rai is just 16 km away.



If you would like to stay off-site, we have identified two nearby hotels which we would recommend:

- [Intercontinental Sanur, Bali](#)
- [Maya Sanur, Bali](#)

If you are considering staying in either of these hotels or somewhere else, we strongly encourage you to check the traveling time (including commuting traffic) between hotels prior to booking. Guests will be required to arrange their own transfers to and from the Hyatt for all meetings, site visits and the programmatic experience.

Please arrange your airport transfer directly through your hotel.

Board Members and Guests

Yusuf Alireza
Global Board Chair

Jane Clifford
Regional Board, Australia

Laura Howard
Regional Board, Asia Pacific

Mary Byron
Global Board

Bassam Aflak
Regional Board, Australia

Dieter Turowski
Regional Board, Asia Pacific

Katie Byron
Daughter of Mary Byron

Kevin Lum
Guest of Bassam Aflak

Yuri Masanao
Regional Board, Japan

Ali Blake
Guest of Mary Byron

Jasan Karas
Regional Board, Australia

Farah Foustok
Regional Board, Middle East

Vicky Tsai
Global Board

Anna Baillie-Karas
Regional Board, Australia

Carmen Alonso
Regional Board, UK

Mike Cannon-Brookes
Global Board

Catherine Zemans
Regional Board, ASEAN

Matthew Strassberg
Regional Board, UK

Najoh Tita-Reid
Global Board

Justin Teo
Regional Board, ASEAN

Conor Davies
Regional Board, UK

Warren Reid
Partner of Najoh Tita-Reid

Kari Cheng
Regional Board, ASEAN

Jo Davies
Regional Board, UK

Stanley Hainsworth
*Incoming Global Board
Member*

Helman Sitohang
Regional Board, ASEAN

Christine Miyasaki
Invited Guest

Joris Dierckx
Regional Board, ASEAN

Room to Read Staff

Dr. Geetha Murali
Chief Executive Officer

Priyanka Gouthaman
Development Director, Singapore

Laurie McMahon
Chief Development and Communications Officer

Jay Duenas
Associate Director, Stakeholder & Community Engagement

David Mitchell
Vice President, International Business Development

Maria McGlynn
Chief of Staff

Joel Bacha
Director of Strategic Expansion

Gerry Savage
Development Analyst, Singapore

ProVisi Room to Read Division – Operational Partner in Indonesia

Provisi¹ is Room to Read's operational partner in Indonesia. Room to Read has partnered with Provisi since the inception of the Room to Read Indonesia program in 2014. Provisi has a Room to Read Division that operates similar to a Room to Read country office. The Room to Read Division coordinates the overall Room to Read Literacy program in Indonesia, providing ongoing monitoring and financial and technical oversight to implementing partners with the support of the Room to Read global technical and operations teams.

Chatarina Trihastruti
Director, Provisi

Rika Yudani
Program Coordinator

Sabrina Sarmili
Program Manager

Tania Amarthani
Development Coordinator

Yayasan Literasi Anak Indonesia (YLAI) – Implementing Partner in Bali

YLAI is a non-profit organization that works in the field of education. YLAI is Room to Read's licensed library partner in Bali. We provide YLAI with technical assistance and financial support to implement the Room to Read school library model. Together YLAI and Room to Read have established 129 school libraries in Bali since 2016.

Aprile Denise
Founder

Indah Sintya
Project Coordinator

Annisa Luthfi
Acting Project Manager

Sendy Diana
Project Coordinator

Farika Pandji
Field Officer

Dimas B
Finance Manager

Fredhie Edwardo
Development Officer

Putu Desy
Program Director

¹ PT Provisi Mandiri Pratama (Provisi) is a private education company that manages educational development projects throughout Indonesia. Provisi was identified as the Room to Read Operational partner in 2014 through a competitive bidding process.



TRAVEL GUIDELINES



Visitor Guidelines



We are so excited to show you our work and have you meet the students and teachers that you support through Room to Read! **Visits provide a vital connection point that we hope you find inspiring, informative, and motivating.** We value our global communities coming together, because the more connected we feel, the more we will act in a way that supports each other and, in turn, serves our world.

Engaging with our local Room to Read staff, students, and communities

Our Room to Read country and community-based teams work hard to operate our programs. They are proud to have visitors to our work and ensure that each visit is memorable, interactive, and educational. The agenda that you receive before your visit is set in advance in collaboration with the school director(s) and teachers and aims for minimal disruptions to the daily functions of the students, teachers, and administrators. We believe it is important to recognize that first and foremost, our projects are places to learn, where daily routines add to the success of the students.



Please be mindful that activities are time-bound. We request that you do not ask for activities to be extended or shortened during your visit. Any changes to the schedule should be requested before your visit.

Throughout your visit, our Room to Read team will be your guide and translate from the local language to English. Please keep in mind that English may be a second, third, or fourth language for many of our staff. If you require translations in a language other than English, we must receive your request at least two weeks in advance of your visit.

We prepare the school for your visit in advance. This includes explaining your relationship with Room to Read and asking community members to refrain from directing funding questions to you. However, please **defer to our staff if you are asked by a school or community member for additional funds, facilities, or materials during your visit.**

Please do not commit to additional support as all school partnerships are carefully planned for and approved by Room to Read in collaboration with local government partners.

Our program model acts as a catalyst for community participation, ownership, and pride. Therefore, we ask visitors to **refrain from bringing gifts or supplies to school communities or local Room to Read staff.** While we appreciate the desire to bring something to the school, we ask visitors not to bring gifts to not foster a culture of dependence between the students and guests. Room to Read relies on community involvement and co-investment to increase the likelihood of success and long-term sustainability of our projects.

We want to make sure we connect in the most appropriate manner, and according to Room to Read's child protection agreement. Please review the agreement [online](#), and note that on your visit, you **cannot**:

Be linked directly to a student (i.e. sponsor a student, start a pen pal relationship, etc.)

Meet with a student alone. A Room to Read staff member must be present at all times.

Offer a student (or his/her family) special gifts or promises of future monetary support (i.e. money for tutoring or school supplies, tuition support for university education, etc.)

Exchange contact information (including social media friend requests) with local Room to Read staff, students, or community members. If you have questions following your visit, please direct them to your main contact on the Development team.

In many of our countries of operation, **it is customary for schools to welcome guests by presenting them with flowers, garlands, and/or food**. Please be sure to take flowers or any other non-food gift items with you when you depart as it will be seen as disrespectful to leave them behind. If you are allergic to pollen and/or grass, tell a Room to Read staff member so they can communicate this to the school. If you are offered food or drink during your visit, you should accept it, though it is a personal choice whether to eat the food offered. Sealed bottled water and soft drinks are generally safe to consume. Feel free to pass anything off to our local staff that you do not want. If you have questions about culturally appropriate responses to gifts, please check with the Room to Read staff member leading your visit.



Preparing for a School Visit

Government schools in the countries where we work are often **not equipped for those with physical disabilities**. If you require wheelchair-accessible vehicles or need special arrangements at the school, please let us know as soon as possible.

Sharing Your Experience

We invite you to share your experience with your network!

Photos and videos are the best way to spread the word about your Room to Read visit and the work that you support. We ask that you **document your visit in a sensitive manner and in alignment with our [Visitor Agreement and Child Protection Code of Conduct](#), and [branding guidelines](#)**. It is critical that you **never** photograph someone in a situation that puts them at risk, portrays personal or sensitive information, or compromises their privacy or safety. Please speak to your Room to Read contact in advance of your visit to determine what photography and/or videography is appropriate.

Remember that your photos, videos, and description of your visit will reflect upon a group of people who are often not given a platform to share their own voices. We ask that you share the story of communities responsibly.

It is important to **dress appropriately** and wear modest clothes when visiting schools. This includes covered knees and shoulders for all genders. Additionally, women should not wear low-cut tops. Do not wear camouflage patterns. When entering a library or home, it is respectful to remove your shoes and hat.

As a global organization, Room to Read strives to be socially responsible, promote ethical travel to our project sites, and ensure that we are always respectful of the communities we work with and their respective cultures. We also seek to provide positive experiences to all visitors to Room to Read school communities or offices. Whether you are a novice traveler or a veteran globetrotter, below are tips that can help you prepare for this unique experience:

- Room to Read works in partnership with local governments and communities. *As a guest and visitor, we encourage you to approach the experience with empathy*, assume positive intentions, and treat the people you meet as experienced and valuable partners from whom you can learn in our shared goal to promote literacy and gender equality.
- When visiting local communities, it's helpful to reflect on your own cultural perceptions, which are based on your personal lived experience and cultural background. If something makes you uncomfortable, recognize the value of being uncomfortable, ask yourself why and learn more about potentially conflicting ideas from another point of view.
- Every trip you plan comes with choices that impact the people and environments that call your destination home. From where you choose to eat and sleep, the resources you consume, the places you visit, and the ways you participate in local culture, there are many ways to make [responsible travel choices](#).

Following your visit, we kindly ask that you **direct any questions or requests for information to your main contact on the Development Team at Room to Read**. Our local team's primary focus is to oversee the implementation of our programs and therefore cannot manage direct correspondence with donors and visitors outside of your visit.

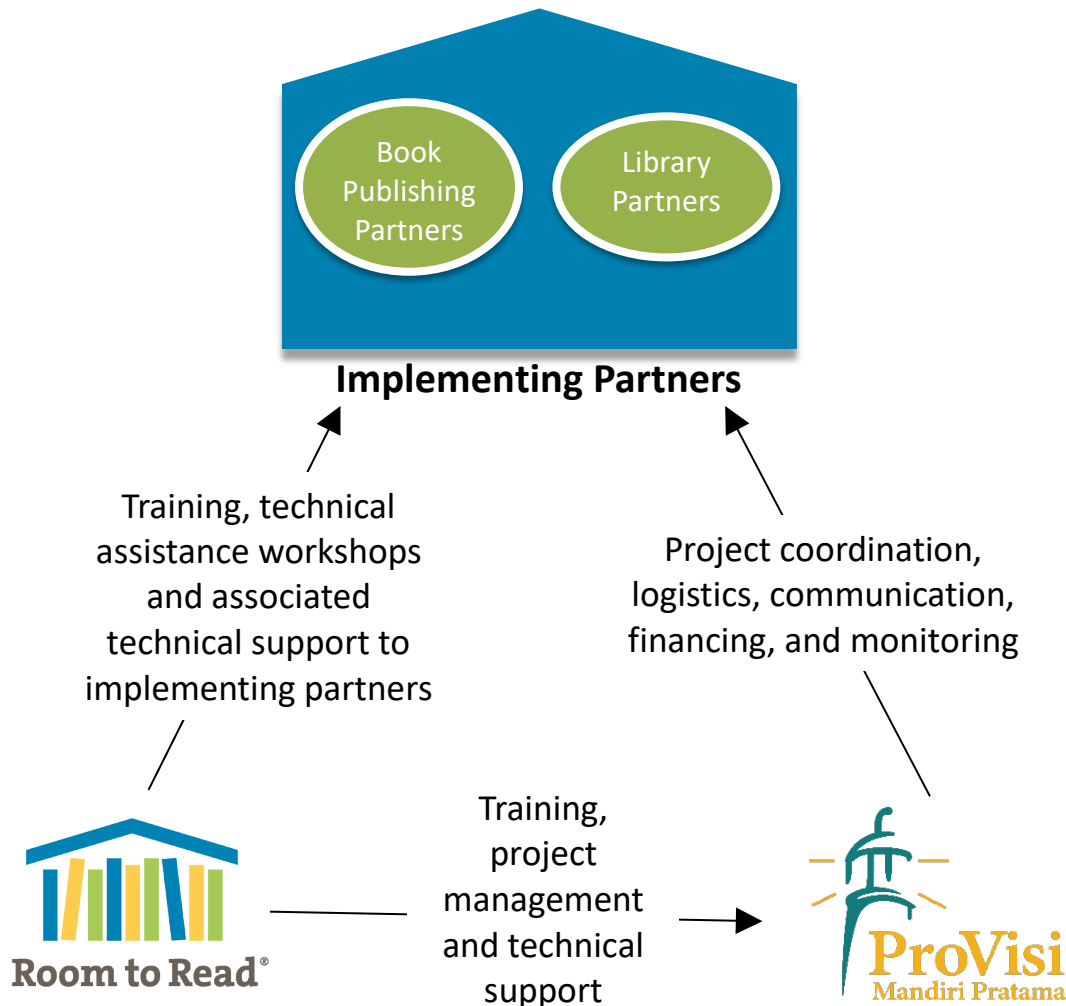
PROGRAMMATIC REVIEW



Produce a high-quality collection of children's books in the country.



Foster a habit of reading among all children in Indonesia.



PT ProVisi Mandiri Pratama is Room to Read's operational partner in Indonesia. Room to Read has partnered with Provisi since the inception of the Room to Read Indonesia program in 2014. Provisi has a Room to Read Division that operates similar to a Room to Read country office. The Room to Read Division coordinates the overall Room to Read Literacy program in Indonesia, providing ongoing monitoring and financial and technical oversight to implementing partners with the support of the Room to Read global technical and operations teams.

Scope of Need

Indonesia is the fourth most populous country in the world, consisting of 17,000 islands, as well as urban, rural and remote regions, diverse cultures and more than 700 living languages — such diverse living circumstances illustrates vast needs. Literacy rates vary drastically across regions throughout the country. According to a recent assessment of behaviors that promote literacy, including size and number of libraries, newspaper readership and other key benchmarks, Indonesia ranked 60 of 61 countries. Further, according to The Economist, for every 100 students who enter school in Indonesia, only 25 will come out meeting minimum international standards in literacy and numeracy.

Objectives

Within this context, the Room to Read program in Indonesia focuses on the following objectives:

- **Scale training and resources nationally** to promote effective reading strategies among teachers and increase grassroots-demand for quality storybooks and school libraries.
- **Establish model school libraries across multiple regions** with the support of the government, more partners and more local investment to provide a pathway for strengthening the foundation of a habit of reading through school libraries at a national level.
- **Increase the number of quality, appropriately levelled, local language storybooks** in the market by building capacity and incentive among publishers to develop more quality storybooks.
- **Enhance national policy and processes** to enable more great storybooks to get into the hands of more children.



Local partners

As a vastly diverse country with a decentralized education system, our partnerships with implementing partners across different regions are a crucial component for ensuring that our work is relevant and appropriate for the country's varying contexts; this model has also proven highly cost-efficient in ensuring the maximum benefit of our programming without operating directly through a Room to Read country office.

Across Indonesia we have trained local nongovernmental organizations (NGOs) to establish and sustain school libraries following our evidence-based model. Room to Read staff also trained eight publishing and NGO partners on the book development process. Indonesia is the first country in which we launched partnerships with commercial publishers — now working with the country's largest publisher as well as a mix of small- and medium-sized publishers — paving the way for innovative publishing practices across Room to Read's program countries. Together with our publishing partners, we have strengthened the capacity of more than 150 local writers and illustrators and distributed more than 580,000 copies of these books to schools throughout the country.

What we've done so far

Room to Read launched our first literacy project in Indonesia in 2014, with a focus on building the capacity of local writers, illustrators and publishers to develop engaging local language storybooks, working with schools to establish primary school libraries and provide teacher training in collaboration with local NGOs and the government. With early success, we secured additional investment in 2016 to scale our work further in three regions of Indonesia — East Java, Bali and East Nusa Tenggara.

Literacy Cloud

In 2017, Room to Read received funding to build a digital book platform, Literacy Cloud, in Bahasa Indonesia. The goal of the platform is to support the Ministry of Education, Culture, Research and Technology's (MoECRT's) National Literacy Movement in fostering a habit of reading among children in Indonesia. Literacy Cloud provides access to high-quality digital storybooks, videos to guide teachers in conducting effective reading activities with storybooks and support for local writers and illustrators to develop more culturally relevant and age-appropriate storybooks for children in Indonesia.

In line with Room to Read's vision for Indonesia, Literacy Cloud enables us to build broad demand for our work and achieve scale in collaboration with MoECRT, national and local education partners, district education offices, schools as well as the children's book publishing sector. The development and scaling of Literacy Cloud has also elevated our ability to benefit many more children and teachers by supporting our programming around the world.



As the COVID-19 pandemic made its way across the world, our experience with Literacy Cloud gave us a glimpse into the potential of technology, and we quickly pivoted to ensure that children in Indonesia had access to quality learning materials, even while at home. With our combined digital and low-tech solutions, we ensured learning continuity for our students to mitigate learning loss. During school closures, for example, MoECRT included Literacy Cloud as one of the few recommended resources for their "Learning at Home" program and included more than 50 titles from Literacy Cloud in their program modules. As schools re-opened across Indonesia, we have found effective ways to continue using the digital resources on Literacy Cloud to support the MoECRT agenda by training teachers across the country on how to conduct engaging reading activities with children.

To date, Room to Read has helped **establish school libraries in 406 Indonesian primary schools** and **developed 127 titles in Bahasa Indonesia** in collaboration with six commercial publishers and two NGO publishing partners. Further, we are working with MoECRT and publishers to make our books available through the MoECRT online catalogue for schools around the country to purchase with government funds. In addition, we are working with MoECRT to conduct three-day national webinars with 26 hours of follow-up course work, culminating in teachers receiving certified professional development credit.

The impressive strides we have achieved in Indonesia since 2014 give us great confidence for future improvements to the country's education ecosystem as we continue to build on our existing partnerships and influence nationwide adoption of our evidence-based practices.

Room to Read's work

Room to Read's children's books in Indonesia are of the highest quality standard – **seven of our storybooks published in Bahasa Indonesia have won international awards** and several books are **used by the Ministry of Education** to promote their 15-Minutes of Reading a Day campaign in government primary schools.

Key concepts from our library program have been integrated into national school libraries guidelines developed by the Ministry of Education and Culture's National Literacy Movement.

Looking forward



Our long-term vision is to ensure every government primary school in Indonesia has a functioning school library, with a high-quality collection of children's storybooks; and that teachers use the storybooks to conduct effective reading activities and support classroom learning. In doing so, we aim to work with MoECRT to create an enabling environment for establishing libraries in Indonesia's 144,000 primary schools, ultimately benefiting 25 million primary school children and fostering a habit of reading in communities across the country.